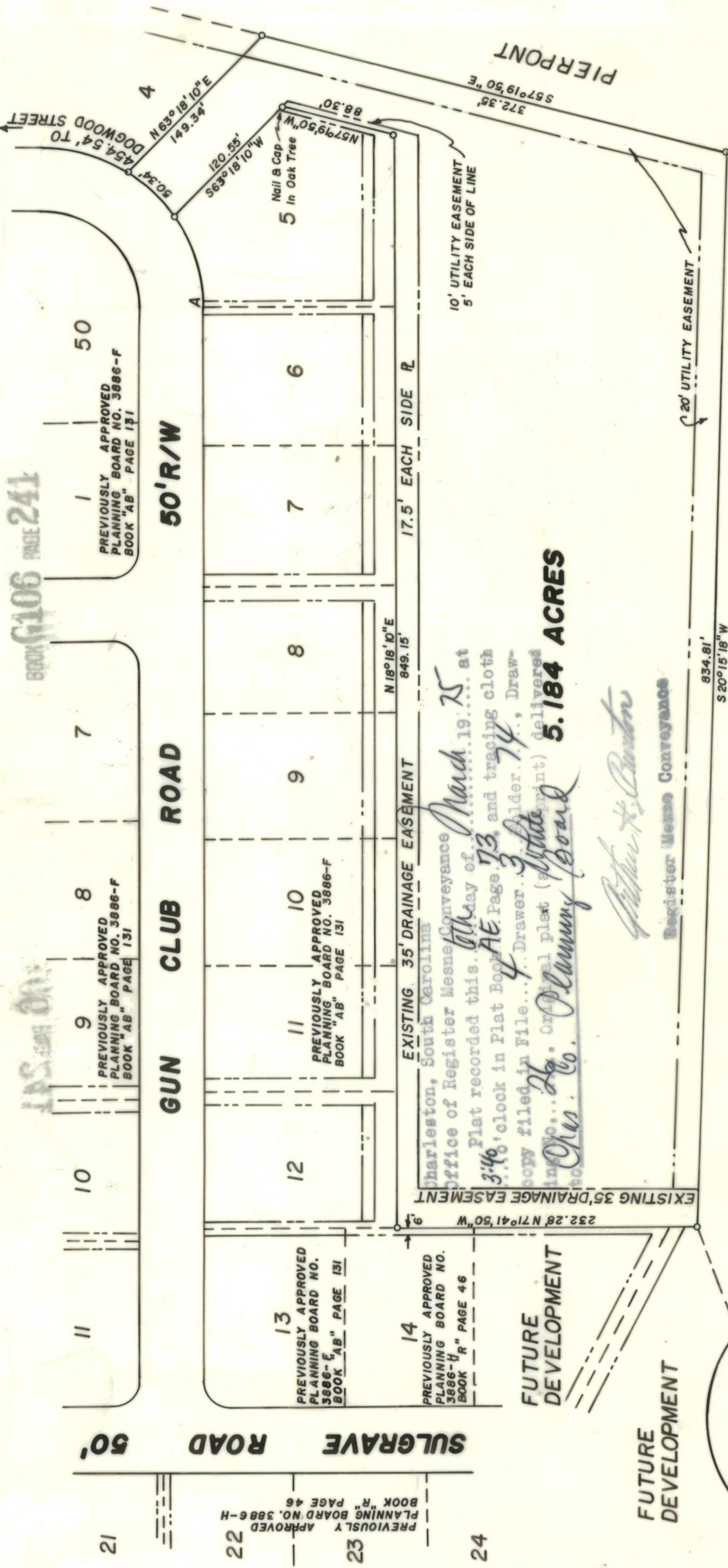


BOOK G106 PAGE 241



5.184 ACRES

FOREST LAKES

ST. ANDREWS PARISH, CHARLESTON COUNTY, S. C.

PLAT OF A 5.184 ACRE TRACT OF LAND

SCALE 1" = 100'

JANUARY 29, 1975

F. I. A. FLOOD INSURANCE DATA

Zone B-Area of Moderate Flood Hazards
No Minimum Base Flood Elevation

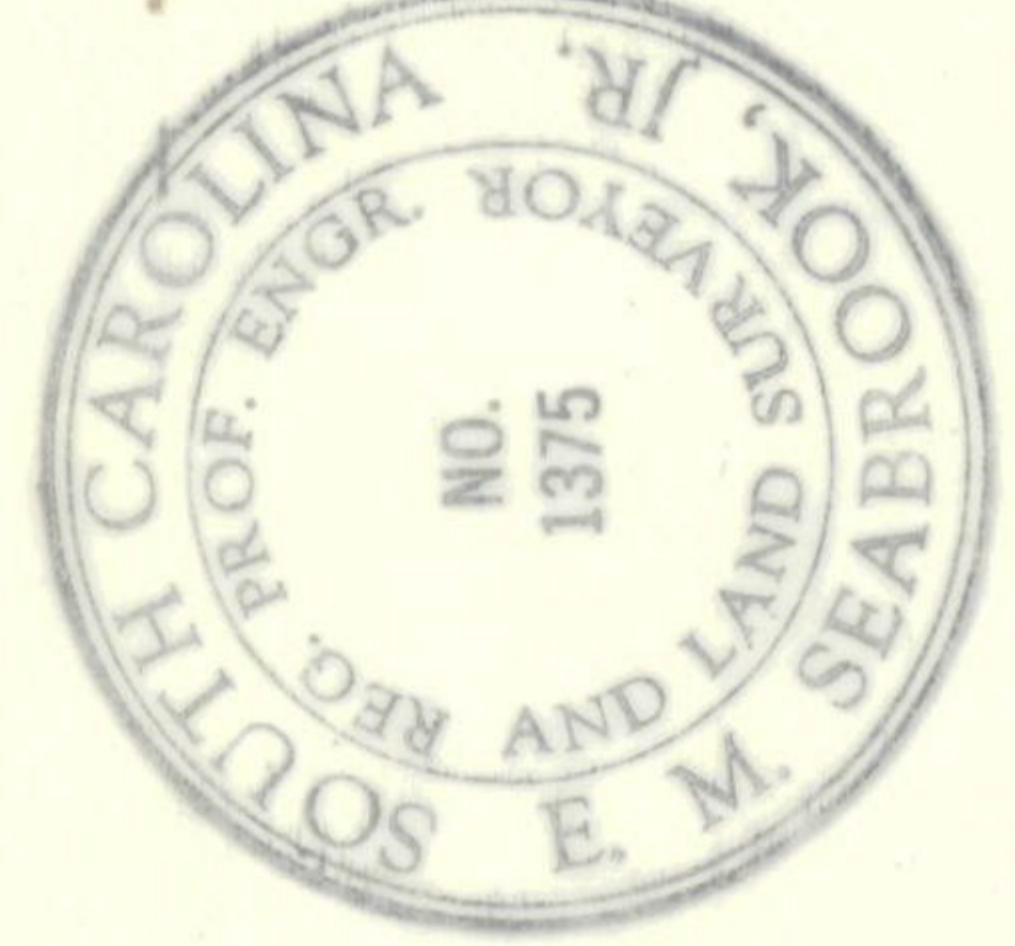
E. M. SEABROOK, JR., INC.
ENGINEERS - SURVEYORS - PLANNERS

APPROVED FINAL PLAT

Caroline K. Sughain
CLERK, CHARLESTON COUNTY COUNCIL

J. M. Seabrook, Jr.
DIRECTOR OF PLANNING
CHARLESTON COUNTY PLANNING BOARD

DATE 3-5-75
3886-N



- NOTES:
1. ALL CORNERS MARKED WITH PIPE UNLESS OTHERWISE NOTED.
 2. ALL CURVE MEASUREMENTS ARE ARC LENGTHS.
 3. ALL EXISTING DRAINAGE EASEMENT SHOWN HEREON ARE PREVIOUSLY APPROVED ON A PLAT BY E.M. SEABROOK, JR., INC. DATED JAN. 18, 1971 AND RECORDED IN PLAT BOOK "AA" PAGE 30.
 4. OWNED BY ROSS DEVELOPMENT CORP.
 5. ACREAGE = 5.184 ACRES.

I, E. M. SEABROOK, JR., a Registered Surveyor of the State of South Carolina, hereby certify that I have surveyed the property shown hereon, that this plat shows the true dimensions of the property, that all necessary markers have been installed and the precision is 1/4000.

E. M. Seabrook, Jr.
E. M. SEABROOK, JR.
CIVIL ENGINEER & LAND SURVEYOR
S. C. Reg. No. 1375

CURVE	Δ	D	T	L	R
A - A	90°00'	45.837°	125.00'	196.35'	125.00'